

Sandra S. Arthur

SILVER AND PEARLS - CYBER CLASS - WEEK 4

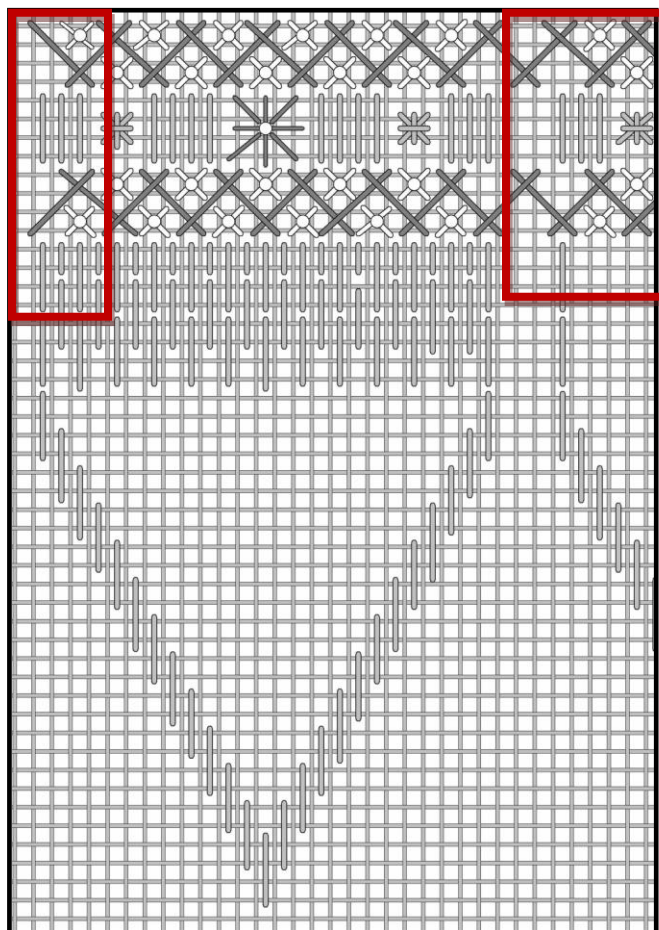
This week we begin adding the beading. The first part of this process involves stitching the beads into the rows of Herringbone Stitch.

Thread beading needle with beading thread. The thread should be doubled and knotted in the end. Use a fairly long thread, approximately 24" to 36" doubled.

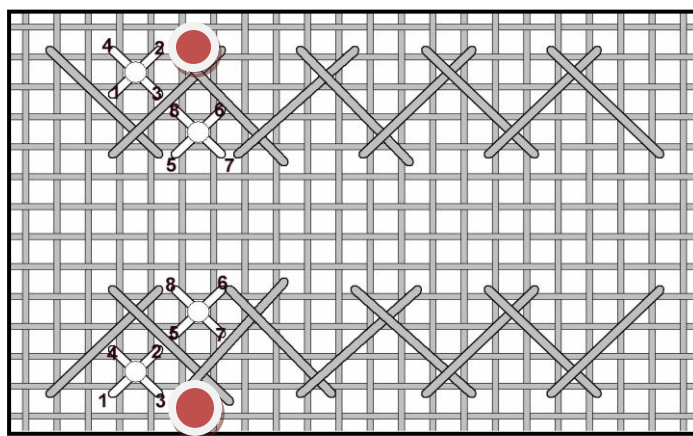
Run the beading thread across the beeswax provided. A couple of times is sufficient.

Anchor the thread on the back side of the ornament at the left side of the band. Refer to the Master Chart.

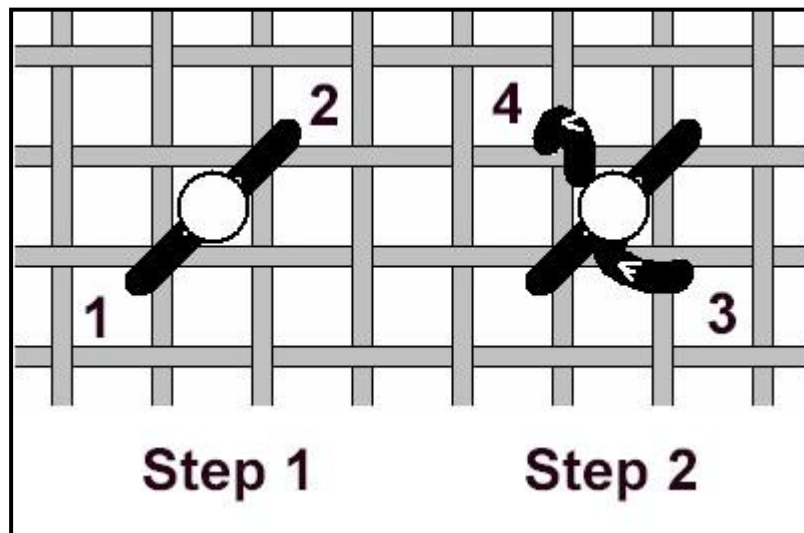
We will be adding one pearl bead, with a Cross Stitch, between each point at the top and bottom section of this Herringbone Stitch band. **Do not add a bead at the furthestmost edge of the points on each side.** A bead in this area will interfere with the finishing of the ornament. **Refer to the Master Chart.**



Also, there are no beads in the top points of the top Herringbone band, nor in the bottom points of the bottom Herringbone band. (Red areas on illustration below indicates no beads.)



In order to have the pearl bead lay straight and upright, bring thread up at 1, add a bead, and sink thread a 2 (the first half of a Cross Stitch). Next, bring thread up at 3, slant the needle from the left, through the bead hole once more, and sink the thread at 4. This forces the bead to lay in the same position all the way across the bands.



Repeat adding beads to the bottom area band of the Herringbone Stitch in the same manner.

Refer to the Master Chart for placement.

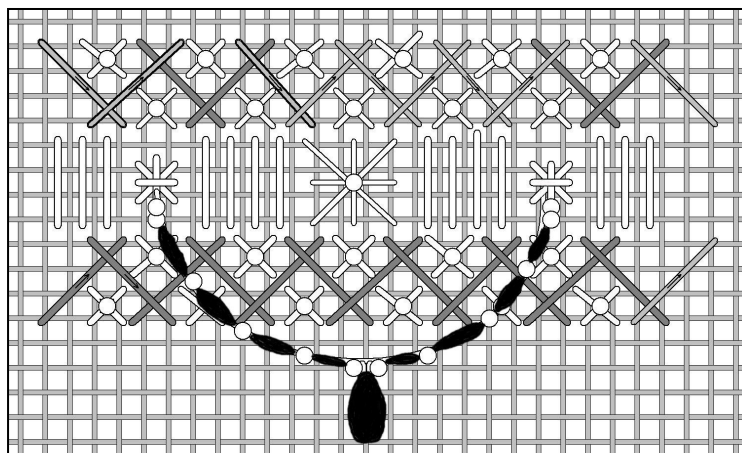
The pearls should all be stitched into the top and bottom Herringbone Stitch bands.

Now is the time to add the beading cascades along the center of the band.

Beginning on the right side of the ornament, start adding the cascades of beads. Thread needle with approximately 24" to 36" length of thread doubled. Make a knot in the beading thread provided, and run it over bees wax as before.

Anchor the thread on the backside of the ornament. Bring the thread to the front of the bottom center of the Smyrna Cross on the far right side.

String beads in the following sequence: 2 pearls, 1 silver bugle, 1 pearl, 1 silver bugle, 1 pearl, 1 silver bugle, 1 pearl, 1 silver bugle, 1 pearl, one drop crystal, a pearl, 1 silver bugle, 1 pearl, 1 silver bugle, a pearl, 1 silver bugle, a pearl, 1 silver bugle, and 2 pearls. The cascade should have 4 silver bugles on each side separated by a single pearl with 2 pearls at the beginning and end and a drop bead in the center. Secure the end of the cascade by looping over the last stitch of the next Smyrna Cross to the left. The stitch on the Smyrna Cross to use is the one which runs horizontal. Knot thread on the back to secure, but do not cut. Knotting the thread on the back is an extra security in case the cascade thread were to get broken some time in the future. This extra knot will limit the damage to one bead cascade only and the others would remain safe.



Bring needle to the front in the same Smyrna Cross (after making knot on the back). String 25 pearls for the next beading cascade. Secure the thread of this cascade to the next Smyrna Cross to the left. Take thread to the back and secure with a knot as before.

Continue making beading cascades across the center band by alternating the cascade using the silver bugle beads and drop bead, and the beading cascade of pearls only.

At this point of progress, there will be 6 cascades with silver bugle beads and 5 cascades of pearl beads only.

The last series of the beading cascade on the left side of the ornament is made up of 25 pearl beads. This cascade is not to be completed until after the ornament has been mounted on the Styrofoam ball. (The area is indicated in the red box in the illustration below.

